

# VFAV MATERIAL CONVEYORS



- Aluminum or Stainless Steel Option
- Hard anodized Finish – Resistant to abrasion
- No Moving Parts
- No Heat Generation
- Maintenance Free



<b>VFAV</b>	<b>3/8</b>	<b>N</b>
Series	Vacuum Port	Thread Types
	1/4	BSP (G)
	3/8	N
	1/2	NPT
	3/4	

The VFAV venturi is an adjustable vacuum venturi offering a straight through flow design. This design feature enables these units to be used in dusty or dirty vacuum applications such as brick, concrete, wood and porous box handling.

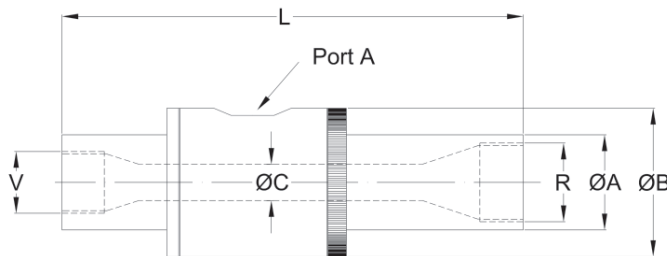
The VFAV venturi is adjustable independent of the compressed air inlet pressure by increasing and decreasing the venturi aperture. This is achieved by rotating the exhaust assembly on the right as shown in the product image above and setting this position with the lock ring.

## SPECIFICATIONS

Model	Supply Pressure bar / psi	Air Consumption l/min/CFM @ Different Vacuum Levels -kPa / "Hg				
		17 / 5	34 / 10	50 / 15	68 / 20	84 / 25
VFAV250	5.5 / 80	112/4	169/6	233/8	276/10	342/12
VFAV375		176/6	327/11	485/17	595/21	825/29
VFAV500		340/12	625/22	795/28	940/33	1280/45
VFAV750		650/23	875/31	1250/44	1790/63	2550/90

Model	Supply Pressure bar / psi	Vacuum Flow l/min/CFM @ Different Vacuum Levels -kPa/"Hg				
		17 / 5	34 / 10	50 / 15	68 / 20	84 / 25
VFAV250	5.5 / 80	112/10	169/8.5	233/7	276/6	342/4.5
VFAV375		176/30	327/26	485/22	595/18	825/14
VFAV500		340/60	625/47	795/40	940/35	1280/23
VFAV750		650/120	875/87	1250/70	1790/51	2550/40

## DIMENSIONS (mm)



Model	V Thread	R Thread	L	ØA	ØB	ØC	Port A
VFAV250	1/4	1/4	94-105	19	32	6.5	1/8
VFAV375	3/8	1/2	155-165	25	45	10	3/8
VFAV500	1/2	3/4	155-160	32	51	10	3/8
VFAV750	3/4	1	175-189	38	58	13	1/2