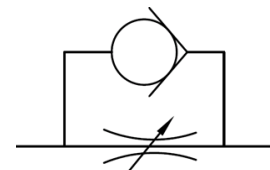




Dimensions (mm)

The NASC flow controls are lightweight, very compact and are ideal for heavy duty applications.

The included lock nut allows installation in panel mount applications.



Model	A	B	C	D	E	ØF	G	H	K	L
NASC-06 	22	32	1/8NPT	22	27	4.3	49.7	56.5	12	18
NASC-08 	26	36	1/4NPT	22	27	4.3	49.7	56.5	12	18
NASC-10 	28	40	3/8NPT	25	30	4.3	52.7	59.5	13	22
NASC-15 	28	40	1/2NPT	30	35	4.3	58.7	65.5	13.5	26

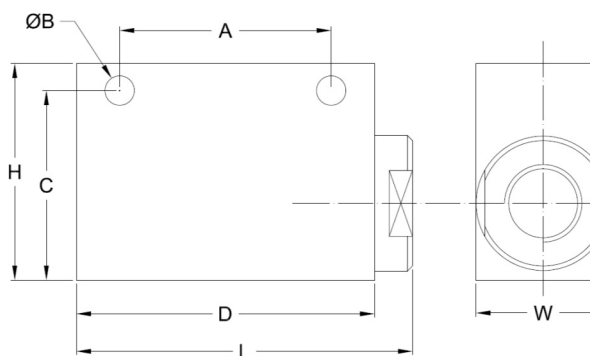
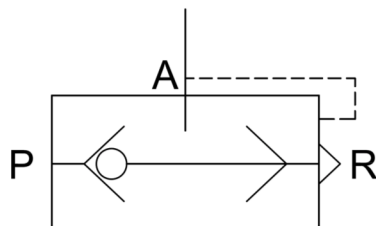


## NQE Quick Exhaust Valve





Part Number	NQE-01	NQE-02	NQE-03	NQE-04
<b>Effective cross section area</b>	16mm <sup>2</sup>	27.5mm <sup>2</sup>	28mm <sup>2</sup>	71mm <sup>2</sup>
<b>Port size</b>	1/8NPT	1/4NPT	3/8NPT	1/2NPT
<b>Working medium</b>	Compressed Air			
<b>Maximum Working pressure</b>	0-150psi(g) (0-10bar)			
<b>Max. Ambient Temperature</b>	32-140°F (0-60°C)			

Quick exhaust valves are used to increase the speed of pneumatic cylinders by dumping the exhaust stream directly at the cylinder port instead of back through the control valve.

The NQE is available in 4 sizes up to 1/2NPT and manufactured in aluminum with an anodized finish.



Dimensions (mm)

Part Number	Thread	L	W	H	A	ØB	C	D
NQE-01 	1/8NPT	46	20	32	30	4.3	27	40
NQE-02 	1/4NPT	62	25	40	39	5.6	33.5	55
NQE-03 	3/8NPT	62	25	40	39	5.6	33.5	55
NQE-04 	1/2NPT	98	38	64	-	-	-	90

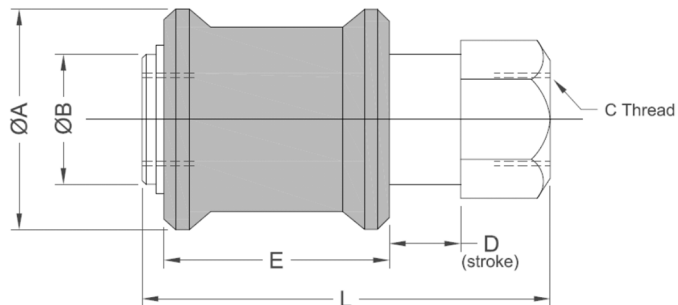
## NHSV Slide Valves



The NHSV slide valve is a simple ON/OFF isolation valve. It is compact unlike its predecessor, the typical ball valve. The 3/2 operation vents the downstream machine pressure when the valve is turned off.

Produced with an anodized finish and in NPT ports. G thread ports are also available.

Part Number	NHSV-01	NHSV-02	NHSV-03	NHSV-04
Thread Size (C)	1/8NPT	1/4NPT	3/8NPT	1/2NPT
Orifice Size	4mm	7mm	10mm	12mm
Working Medium	Air			
Working Pressure	0-150psi(g)			
Ambient Temperature	32 - 140°F			
Sliding Force	20N			



Dimensions (mm)

Model	NHSV-01	NHSV-02	NHSV-03	NHSV-04
A	25	30	35	40
B	13	18	21	26
C	1/8NPT	1/4NPT	3/8NPT	1/2NPT
D	9	11	14	15
E	28	32	39	45
F	14	19	22	27
L	48	58	68	80

## NKA Check Valves

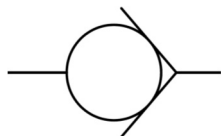
These check valves are able to be used on both pressure and vacuum systems. The crack pressure when being used in a vacuum operation is 10"Hg / 700mbar(a) or 532Torr.





Pressure Connections

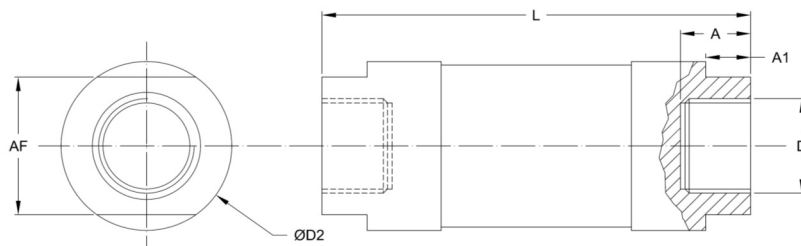
P – Pressure Supply A – Application

Vacuum Connections

P – Application A – Vacuum Source



	NKA-06 	NKA-08 	NKA-10 	NKA-15 
Working Medium	40 micron filtered air			
Port	1/8NPT	1/4NPT	3/8NPT	1/2NPT
Operating Temp	0-60°C / 32-140°F			
Working Pressure	5-150psi(g)			
Crack Pressure	5psi(g)			
Maximum Pressure	225psi(g)			



Dimensions (mm)

Model	Aperture	A	A1	D	ØD2	L	AF
NKA-6	6	10	6	1/8NPT	25	63	22
NKA-8	8	12	6	1/4NPT	25	63	22
NKA-10	10	14	10	3/8NPT	38	81	34
NKA-15	15	14	10	1/2NPT	38	81	34