

**pneuforce.com** ®

# SOLENOID PROCESS VALVES



# N2W & N2S Process Valves

**pneuforce.com**

The N2W and N2S series of brass and stainless steel process valves have been designed for general industry. These valves are developed with a coupled diaphragm and therefore can be used without a media pressure differential such as vacuum duty or very low air pressure applications.

Supplied with a DIN43650 Form A coil these simple and robust valves offer the user unparalleled performance via the over sized orifices. Port sizes from 3/8NPT to 2NPT available.

N2W models are brass and N2S are stainless steel.



N		2W		160	15	24VDC
Thread Type		Valve Body		Body Size	Port Size	Coil Voltage
	BSPP	W	Brass		10 3/8	
N	NPT	S	SS	160	15 1/2	
				200	20 3/4	
				250	25 1	
				350	35 1 1/4	
				400	40 1 1/2	
				500	50 2	

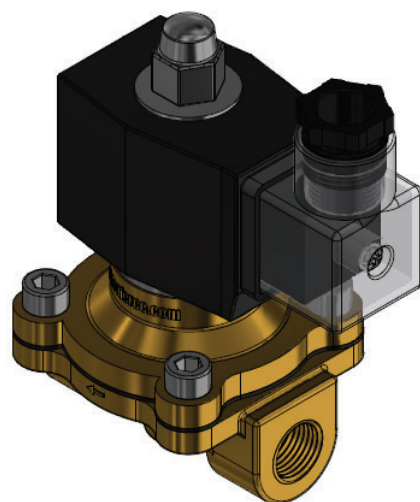
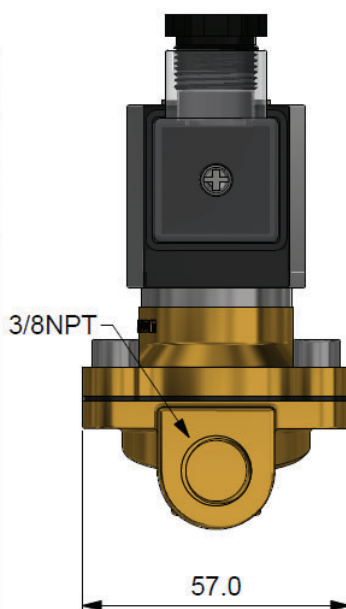
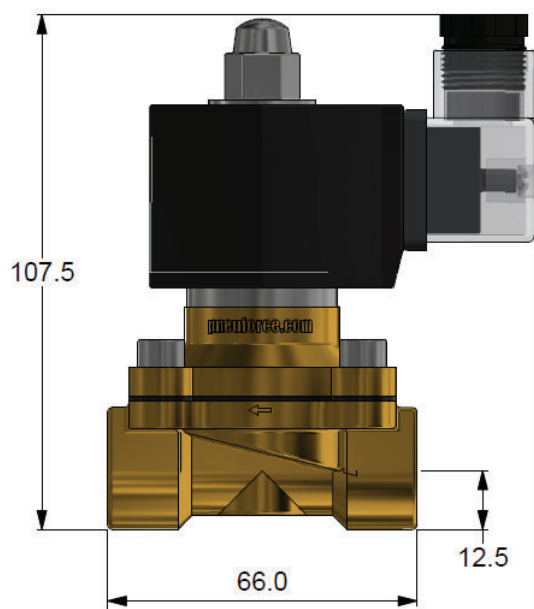
Dimension	*2*160-10	*2*160-15	*2*200-20	*2*250-25	*2*350-35	*2*400-40	*2*500-50
Valve Type	2-Way Normally Closed NC						
Orifice Size Ø (mm)	16		20	25	35	40	50
Cv	4.8		7.6	12	24	29	48
Working Pressure	0-10bar(g) / 0-150psi(g) 110 & 220VAC Coil 0-8bar(g) / 0-120psi(g) 12/24VDC & 24VAC Coil						
Working Medium	Air, Vacuum, Steam and Water						
Operating Temperature	-10 to 80°C / 14 to 176°F NBR Seal   -15 to 120°C / 5 to 248°F Viton Seal						
Coil & Protection Class	H Class IP65						
Seal Material	NBR (Viton Option - please inquire)						
Power Consumption	DC23.4W AC25VA				DC40W AC50VA		
Coil Duty	100%						
Electrical Connection	Form A DIN Connector						



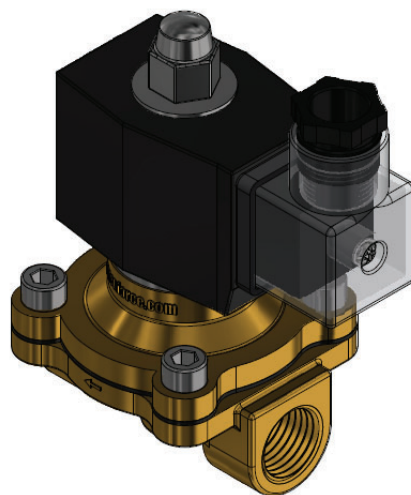
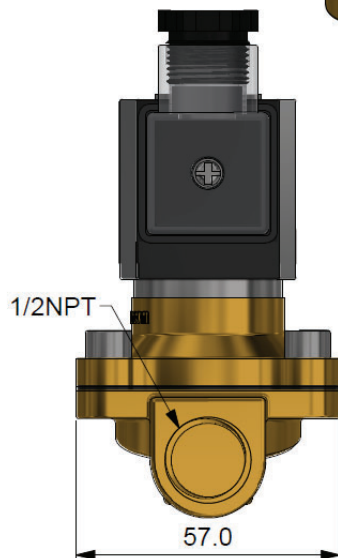
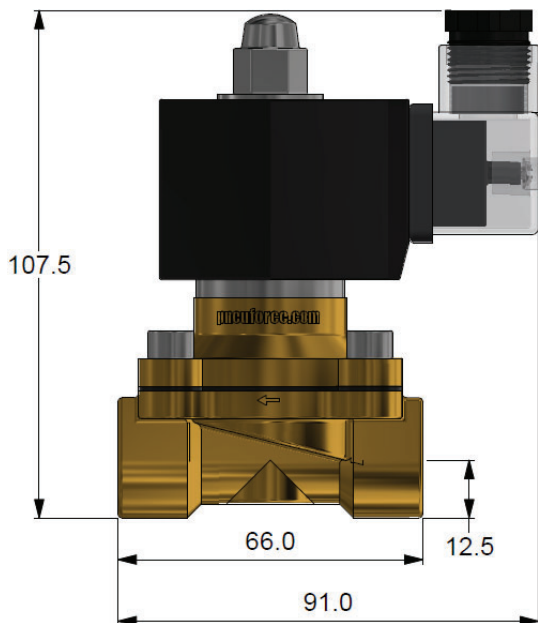


**DIMENSIONS (mm)**

N2\*160-10-\*

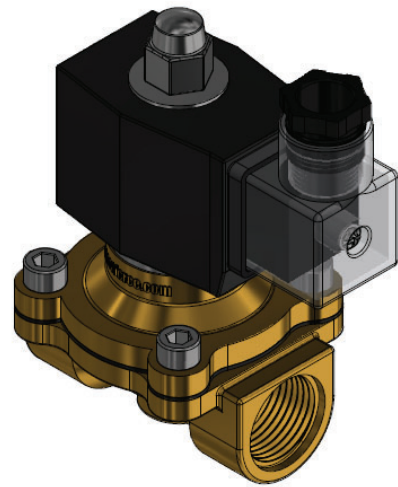
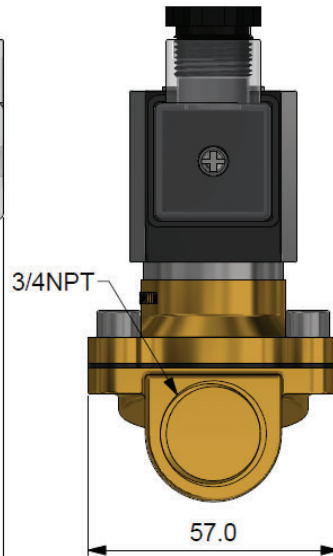
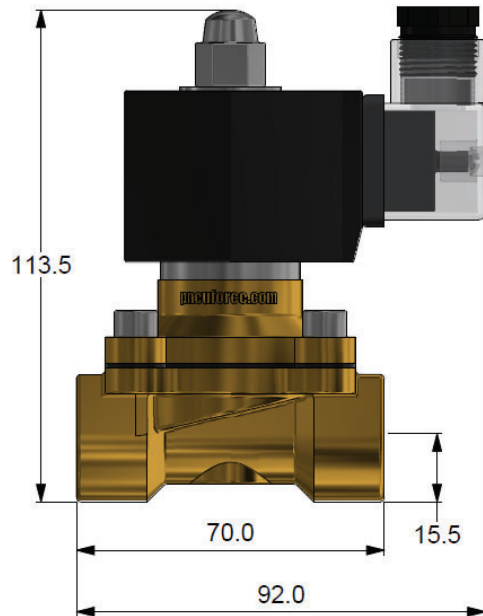


N2\*160-15-\*

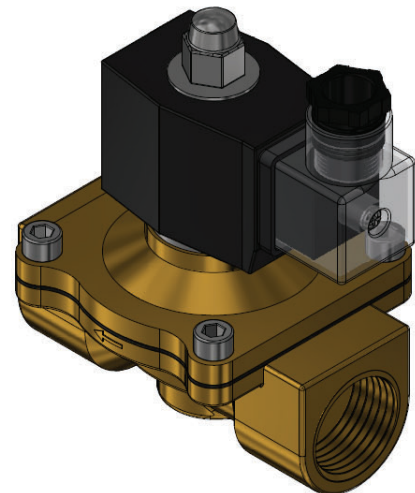
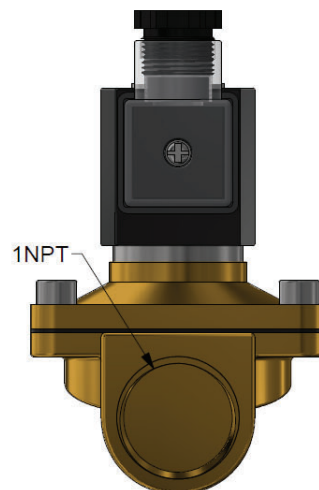
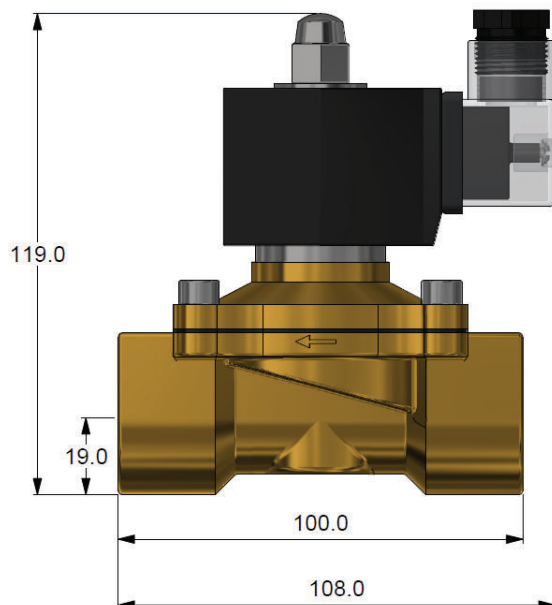


**DIMENSIONS (mm)**

N2\*200-20-\*

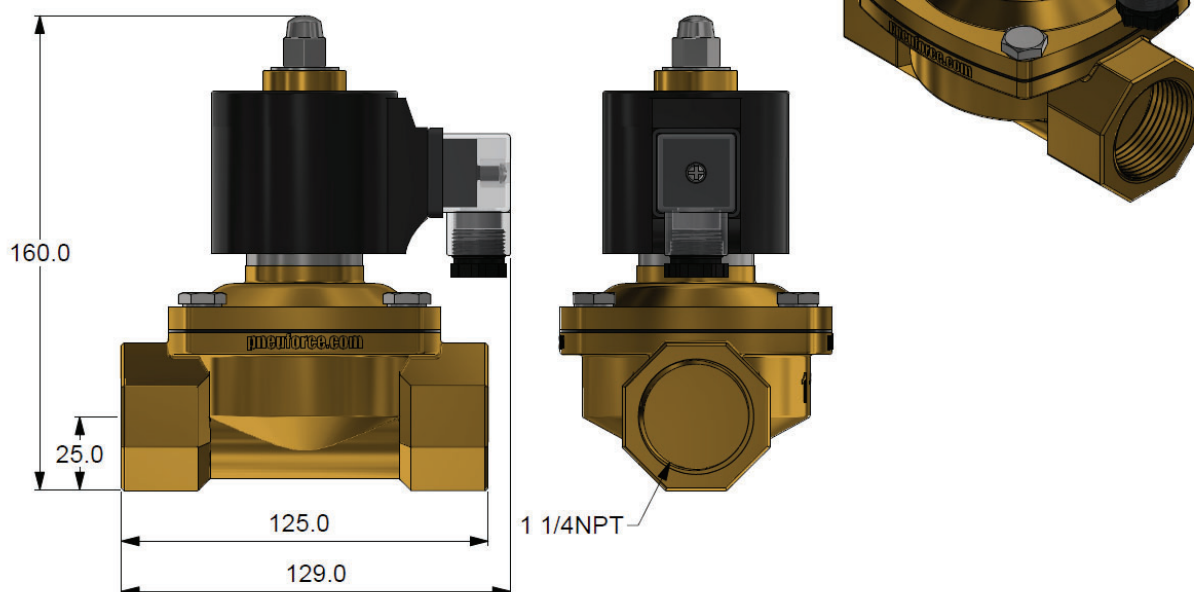


N2\*250-25-\*

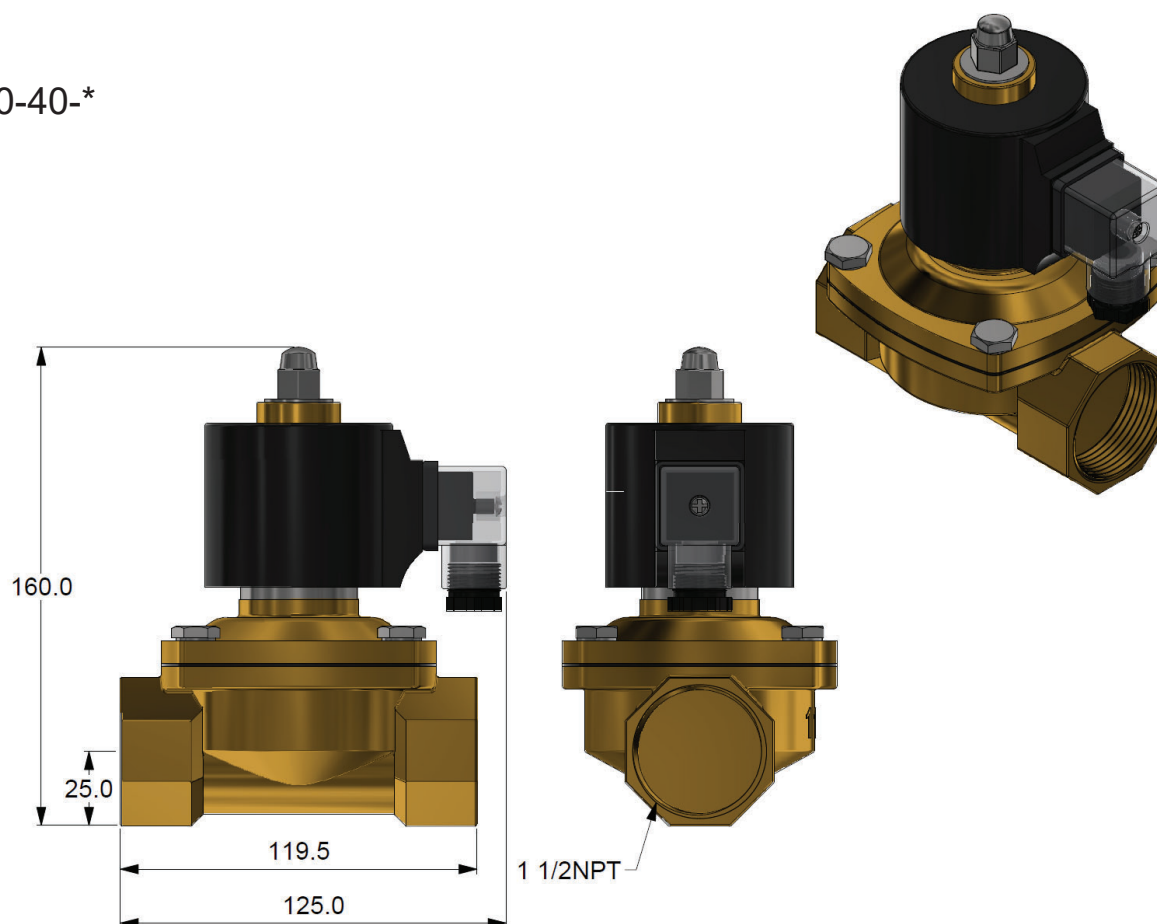


**DIMENSIONS (mm)**

N2\*350-35-\*



N2\*400-40-\*

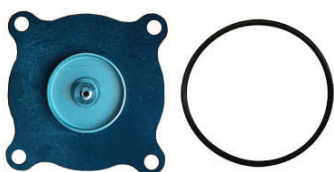


**SPARE COILS**



Coil Part Number	Valve Model	Voltage
N2W160/200/250-COIL-110VAC-J	160-200-250 Body Sizes	110VAC
N2W160/200/250-COIL-24VDC-J	160-200-250 Body Sizes	24VDC
N2W350/400/500-COIL-110VAC-J	350-400-500 Body Sizes	110VAC
N2W350/400/500-COIL-24VDC-J	350-400-500 Body Sizes	24VDC

**SPARE DIAPHRAGM / SEAL KITS**



Part Number	Valve Model
FX999-2W160-15-VITON	160 Body Size
FX999-2W160-15-NBR	
FX999-2W160-15-EPDM	
FX999-2W200-20-VITON	200 Body Size
FX999-2W200-20-NBR	
FX999-2W200-20-EPDM	
FX999-2W250-25-VITON	250 Body Size
FX999-2W250-25-NBR	
FX999-2W250-25-EPDM	

Part Number	Valve Model
FX999-2W350-35-VITON	350 Body Size
FX999-2W350-35-NBR	
FX999-2W350-35-EPDM	
FX999-2W400-40-VITON	400 Body Size
FX999-2W400-40-NBR	
FX999-2W400-40-EPDM	
FX999-2W500-50-VITON	500 Body Size
FX999-2W500-50-NBR	
FX999-2W500-50-EPDM	



3D CAD Models available online at  
pneuforce.com

**pneuforce.com** 