

The N2V Series of direct acting poppet valves are available in both a 2-way and 3-way configuration.

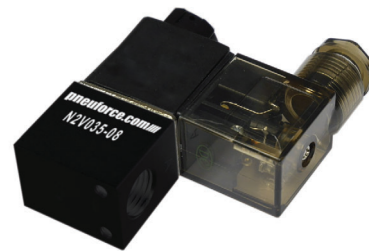
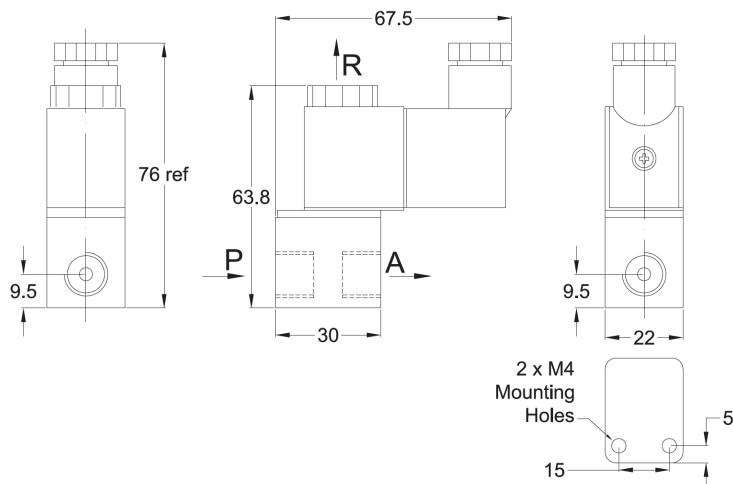
The exhaust port of the N2V035 valves is a 10-32UNF (M5) thread in the top of the solenoid stem.

N		2V		025		06		24VDC	
Thread Type		Valve Series		Valve Type		Valve Type		Coil Voltage	
	BSPP			025	2-way	06	1/8	12VDC	
N	NPT			035	3-way	08	1/4	24VDC	
								24VAC	
								110VAC	
								230VAC	



Dimension	N2V025-06-24VDC	N2V025-08-24VDC	N2V035-06-24VDC	N2V035-08-24VDC
Valve Type	2-way		3-way	
Port Sizes	1/8	1/4	1/8	1/4
Cv	0.23		0.05	
Orifice Size	Ø2.5mm		Ø1.0mm	
Working Pressure	100bar(a) to 7bar(g) / 28” Hg to 115psi(g)			
Working Medium	Air			
Ambient Temperature	-5°C - +80°C / 23°F - 176°F			
Working Temperature	5°C - +60°C / 41°F - 140°F (no freezing)			
Cycle rate	10 cycles/sec			
Coil Insulation & Protection Class	F Class, IP65 (CE Certification)			
Coil Duty Cycle	100% ED			
Power Consumption	AC: 6.4VA DC: 6.5W			
Voltage Range	+/- 10%			
Reaction Time	0.05 sec			
Electrical Connection	D = Form B DIN (LED indicator) or W = Flying Lead Coil (18” Lead Wire)			
Body Material	Hard Anodized Aluminum			

DIMENSIONS (mm)



The N2W series of brass process valves have been designed for general industry. These valves are developed with a coupled diaphragm and therefore can be used without a media pressure differential such as vacuum duty or very low air pressure applications.

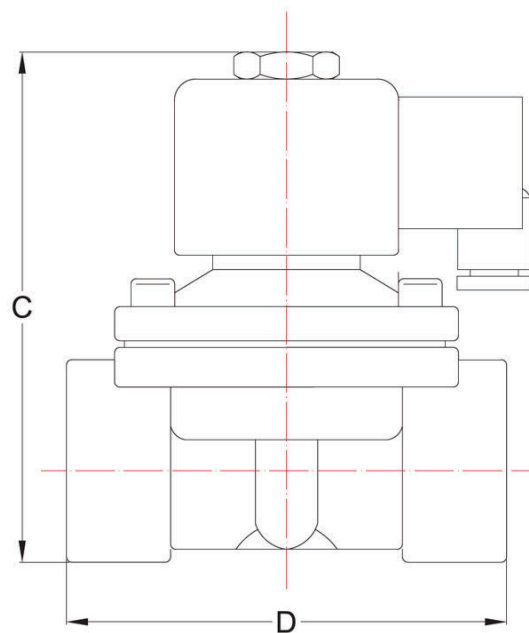
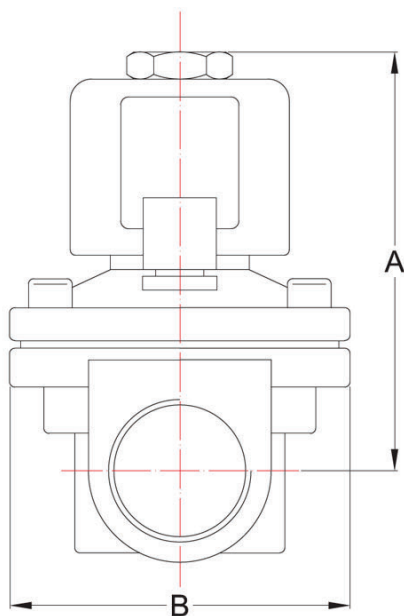
Supplied with a DIN43650 Form A coil these simple and robust valves offer the user unparalleled performance via the over sized orifices. Port sizes from 3/8NPT to 2NPT and Viton® seals available as an option. N2W models are brass and N2S are stainless steel.



N		2W		160	15	24VDC
Thread Type		Valve Body		Body Size	Port Size	Coil Voltage
	BSPP	W	Brass	160	10 3/8	12VDC
N	NPT	S	SS	200	15 1/2	24VDC
				250	20 3/4	24VAC
				350	25 1	110VAC
				400	35 1 1/4	230VAC
				500	40 1 1/2	
					50 2	

Dimension	N2*160-10	N2*160-15	N2*200-20	N2*250-25	N2*350-35	N2*400-40	N2*500-50
Valve Type	2-Way Normally Closed NC						
Orifice Size Ø (mm)	16		20	25	35	40	50
Cv	4.8		7.6	12	24	29	48
Working Pressure	0-10bar(g) / 0-150psi(g) 110 & 220VAC Coil 0-8bar(g) / 0-120psi(g) 12/24VDC & 24VAC Coil						
Working Medium	Air, Vacuum, Steam and Water						
Operating Temperature	-10 to 80°C / 14 to 176°F NBR Seal -15 to 120°C / 5 to 248°F Viton Seal						
Coil & Protection Class	H Class IP65						
Seal Material	NBR (Viton® Option - please inquire)						
Power Consumption	14W @ <100psi 20W @ <150psi						
Coil Duty	100%						
Electrical Connection	Form A DIN Connector						

DIMENSIONS (mm)



Model	Port Size	Cv	A	B	C	D	Weight (lbs)
N2*160-10	3/8	4.8	102	57	117	69	1.6
N2*160-15	1/2	4.8			1.8		
N2*200-20	3/4	7.6	107			124	73
N2*250-25	1	12	112	74	135	99	3.2
N2*350-35	1 1/4	24	142	95	172	123	5.7
N2*400-40	1 1/2	29					
N2*500-50	2	48	172	123	209	168	9.9



- Stainless steel body
- Pneumatic pilot operation
- Normally closed and normally open models
- Single acting and double acting options
- Available in BSPP & NPT threads & Flange
- Port sizes up to 2 1/2"

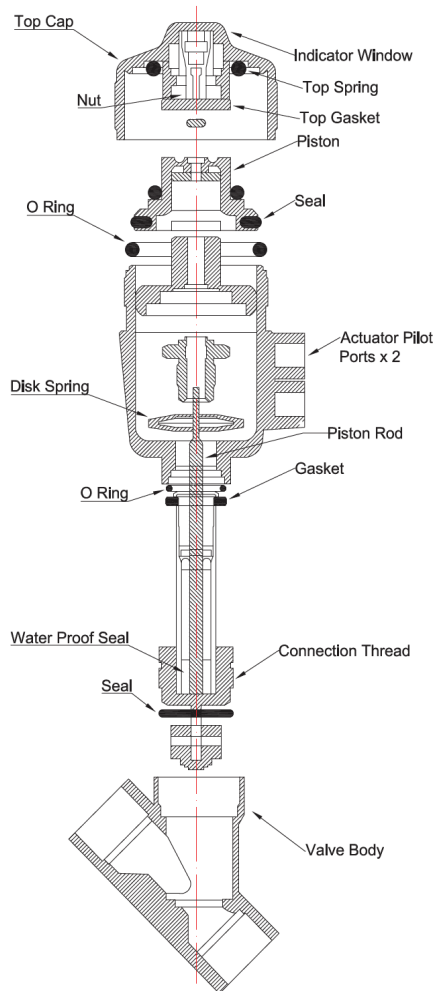


G		ASV		15		S		1		NC	
Connection Type		Model Series		Orifice (mm)		Body Material		Actuation		Type	
G	BSPP			15		S Stainless Steel		1	Single Acting	NC	Normally Closed
N	NPT			20				2	Double Acting	NO	Normally Open
DN	Flange			25							
BL	Bolt Flange			35							
				40							
				50							
				65							

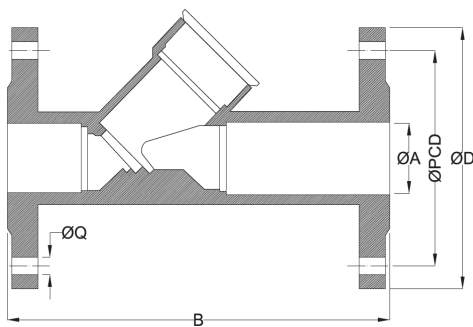
SPECIFICATIONS

Orifice (mm)	Thread	Flow m³/hr / CFM	Max Working Pressure bar / psi	Min Operating Pressure bar / psi	Medium Temperature
15	1/2"	4.2 / 2.5	16 / 240	0.39 / 5.9	-10 to 180°C 14 to 356°F
20	3/4"	8 / 4.7	11 / 165		
25	1"	19 / 11.2		0.42 / 6.3	
35	1 1/4"	28 / 16.5	15 / 225	0.5 / 7.5	
40	1 1/2"	42 / 25	12.5 / 188	0.44 / 6.6	
50	2"	55 / 32.5	10 / 150	0.4 / 6	
65	2 1/2"	65 / 38.5			

INTERNAL STRUCTURE

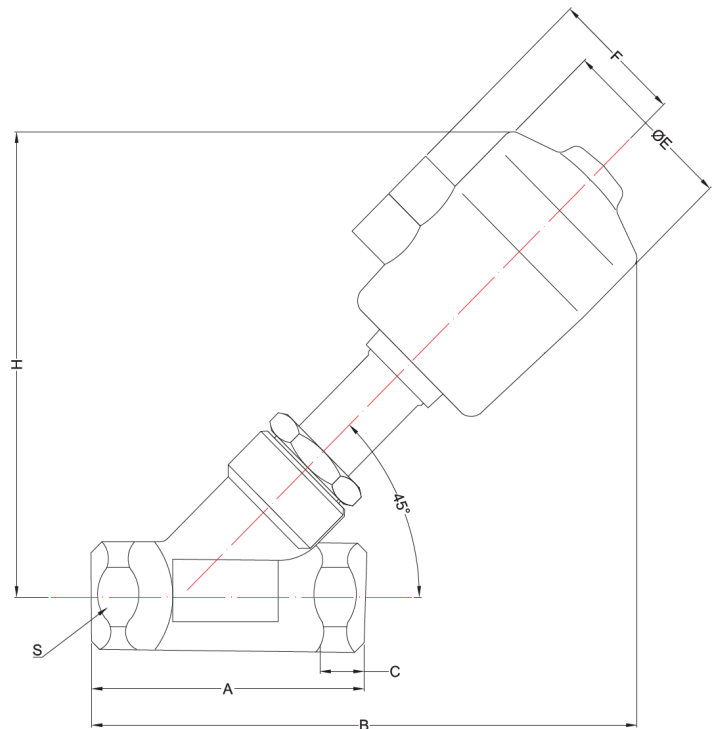


BL FLANGE MODELS



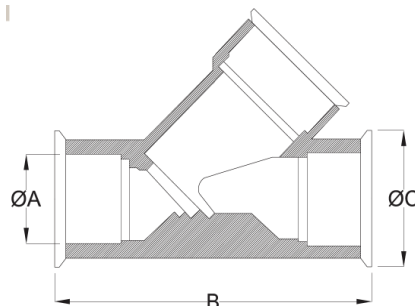
Orifice (mm)	ØA	B	ØD	PCD x 4	ØQ
15	19	130	95	65	14
20	25	150	105	75	
25	32	160	115	85	
32	38	180	135	100	
40	45	200	145	110	18
50	57	230	160	125	
65	68	290	182	145	

DIMENSIONS



Orifice (mm)	Port D	A	B	C	ØE	F	H	S
15	1/2"	85	173	12	64	44	137	27
20	3/4"	95	178				145	32
25	1"	105	212	14	80	52	173	41
32	1 1/4"	118	236	16			189	55
40	1 1/2"	130	230	18			250	70
50	2"	150	238	20	100	62	265	80
65	2 1/2"	155	300	25	125		265	80

DN FLANGE MODELS



Orifice (mm)	ØA	B	ØC
15	19	120	50.50
20	25	130	
25	32	140	
32	38	150	64
40	45	180	
50	57	195	
65	68	230	77

- Valve series uses low friction spool design with manual piston reset for improved reliability, functionality and life
- Spool passage has a Ra0.1 surface finish for smooth spool movement and extended O ring life
- HNBR Spool seals
- 5/2 and 5/3 way models
- Pilot actuator models (N5A) available upon request



N

Thread Type

	BSPP
N	NPT

4V

Series Type

1

10

Valve Function

10	Single Actuator 5/2
20	Double Actuator 5/2
30C	Double Coil Center Closed
30E	Double Coil Center Exhaust
30P	Double Coil Center Pressure

06

Port Size

06	1/8
----	-----

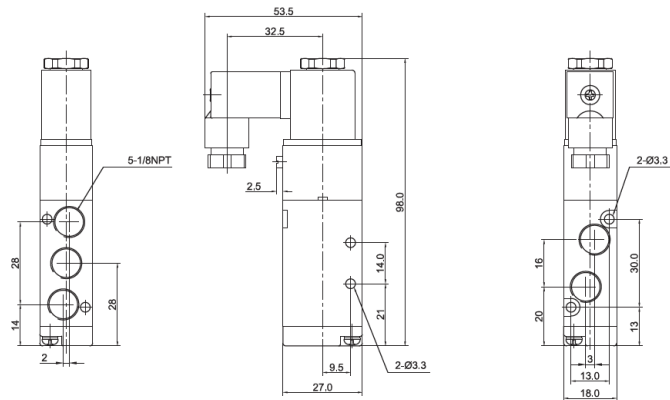
24VDC

Voltage

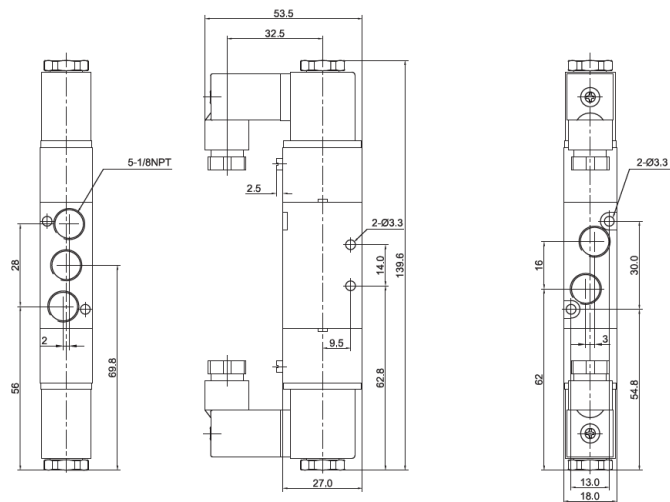
12VDC
24VDC
24VAC
110VAC
230VAC

Valve Model	N4V110-06	N4V120-06	N4V130C-06	N4V130E-06	N4V130P-06
Valve Type	5/2		5/3		
Orifice and Cv	12mm² 0.56Cv		9mm² 0.5Cv		
Port Size	Inlet, Exhaust and Signal Ports all 1/8NPT				
Working Medium	40 Micron Filtered Air				
Operation	Internal Pilot				
Working Pressure	1.5-8bar (g) 22 - 120psi				
Test Pressure	12bar(g) 180psi				
Ambient Temperature	-20°C to 70°C -4°F to 160°F				
Solenoid Tolerance	DC +/-10% AC +/-15%				
Power Consumption	DC 2.5W AC 2.4VA				
Insulation	Class F IP65				
Coil Connection	DIN Connector Form C 9.4mm				
Cycle Rate	5/sec				
Response Time	0.05sec				

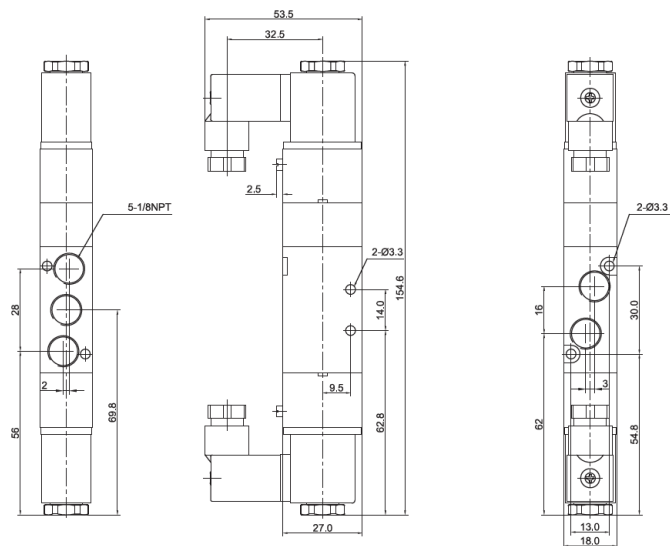
N5V110-06



N5V120-06



N5V130-06



30C



- Valve series uses low friction spool design with manual piston reset for improved reliability, functionality and life
- Spool passage has a Ra0.1 surface finish for smooth spool movement and extended O ring life
- HNBR Spool seals
- 5/2 and 5/3 way models
- Pilot actuator models (N5A) available upon request

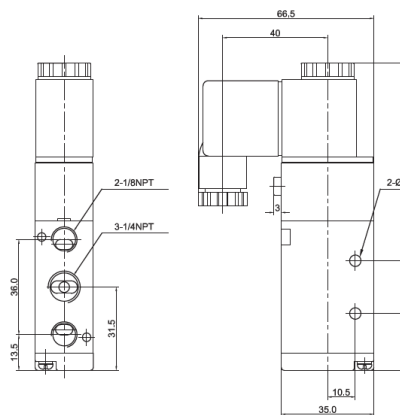
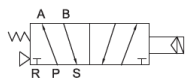


N		4V	2	10		-	08	-	24VDC
Thread Type		Series Type	Body Size	Valve Function			Port Size		Voltage
	BSPP			10	Single Actuator 5/2		08	1/4	12VDC
N	NPT			20	Double Actuator 5/2				24VDC
				30C	Double Coil Center Closed				24VAC
				30E	Double Coil Center Exhaust				110VAC
				30P	Double Coil Center Pressure				230VAC

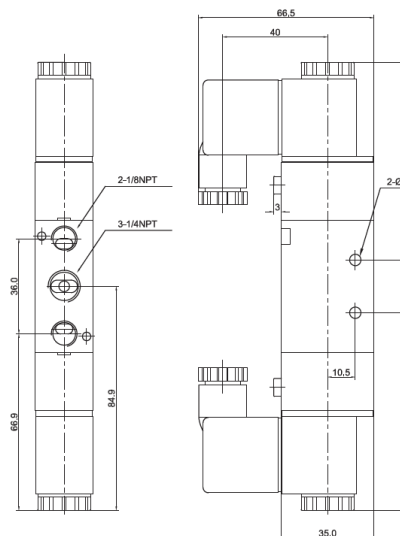
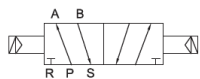
Valve Model	N4V210-08	N4V220-08	N4V230C-08	N4V230E-08	N4V230P-08
Valve Type	5/2		5/3		
Orifice and Cv	16mm² 0.89Cv		12mm² 0.67Cv		
Port Size	Inlet and Signal Ports all 1/4NPT, Exhaust 1/8NPT				
Working Medium	40 Micron Filtered Air				
Operation	Internal Pilot				
Working Pressure	1.5-8bar (g) 22 - 120psi				
Test Pressure	12bar(g) 180psi				
Ambient Temperature	-20°C to 70°C -4°F to 160°F				
Solenoid Tolerance	DC +/-10% AC +/-15%				
Power Consumption	DC 2.5W AC 2.4VA				
Insulation	Class F IP65				
Coil Connection	DIN Connector Form B				
Cycle Rate	5/sec				
Response Time	0.05sec				

DIMENSIONS (mm)

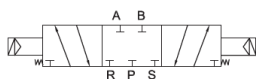
N5V210-08



N5V220-08



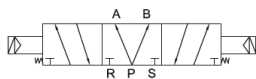
N5V230-08



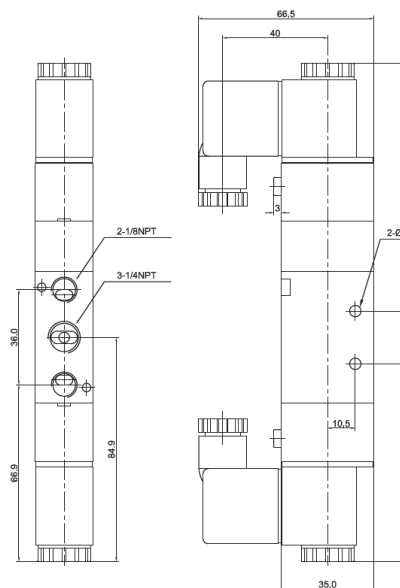
30C



30E



30P



- Valve series uses low friction spool design with manual piston reset for improved reliability, functionality and life
- Spool passage has a Ra0.1 surface finish for smooth spool movement and extended O ring life
- HNBR Spool seals
- 5/2 and 5/3 way models
- Pilot actuator models (N5A) available upon request

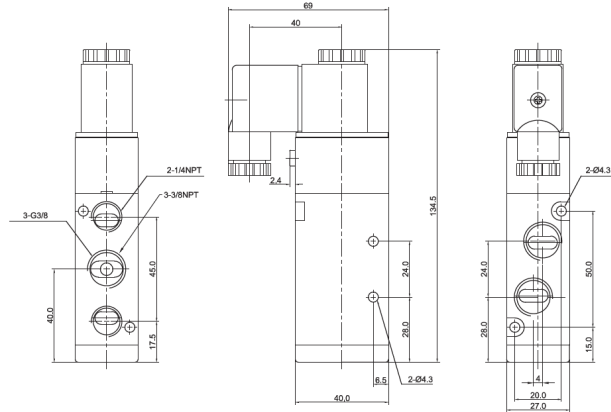


N		4V		3		10		10		24VDC	
Thread Type		Series Type		Body Size		Valve Function		Port Size		Voltage	
	BSPP					10	Single Actuator 5/2	10	3/8	12VDC	
N	NPT					20	Double Actuator 5/2			24VDC	
						30C	Double Coil Center Closed			24VAC	
						30E	Double Coil Center Exhaust			110VAC	
						30P	Double Coil Center Pressure			230VAC	

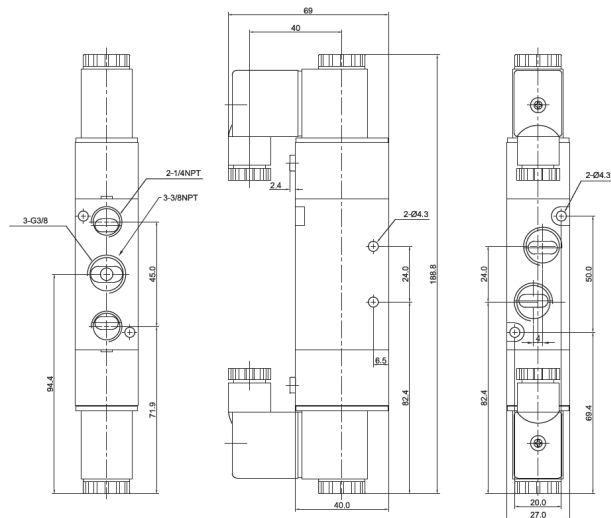
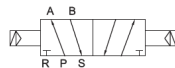
Valve Model	N4V310-10	N4V320-10	N4V330C-10	N4V330E-10	N4V330P-10
Valve Type	5/2		5/3		
Orifice and Cv	30mm² 1.68Cv		18mm² 1.0Cv		
Port Size	Inlet and Signal Ports all 3/8NPT, Exhaust 1/4NPT				
Working Medium	40 Micron Filtered Air				
Operation	Internal Pilot				
Working Pressure	1.5-8bar (g) 22 - 120psi				
Test Pressure	12bar(g) 180psi				
Ambient Temperature	-20°C to 70°C -4°F to 160°F				
Solenoid Tolerance	DC +/-10% AC +/-15%				
Power Consumption	DC 2.5W AC 2.4VA				
Insulation	Class F IP65				
Coil Connection	DIN Connector Form B				
Cycle Rate	5/sec				
Response Time	0.05sec				

DIMENSIONS (mm)

N5V310-10



N5V320-10



N5V330-10



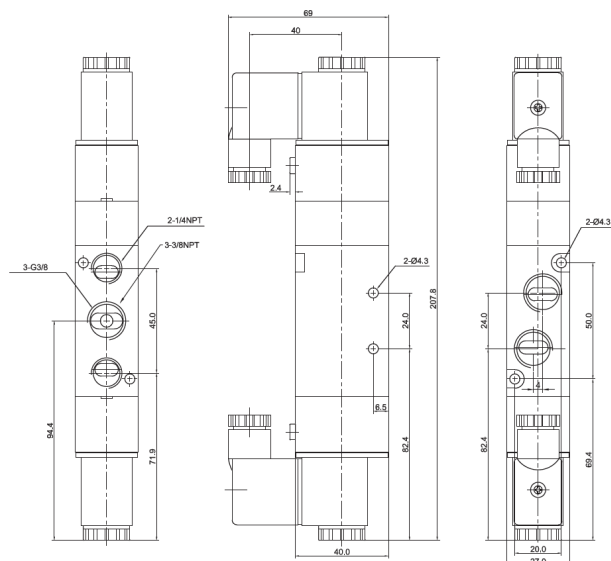
30C



30E



30P



- Valve series uses low friction spool design with manual piston reset for improved reliability, functionality and life
- Spool passage has a Ra0.1 surface finish for smooth spool movement and extended O ring life
- HNBR Spool seals
- 5/2 and 5/3 way models
- Pilot actuator models (N5A) available upon request

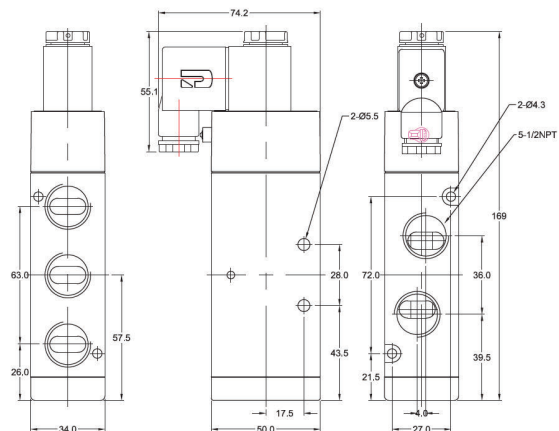


N		4V		4		10		-		15		-		24VDC	
Thread Type		Series Type		Body Size		Valve Function				Port Size				Voltage	
	BSPP					10	Single Actuator 5/2			15	1/2			12VDC	
N	NPT					20	Double Actuator 5/2							24VDC	
						30C	Double Coil Center Closed							24VAC	
						30E	Double Coil Center Exhaust							110VAC	
						30P	Double Coil Center Pressure							230VAC	

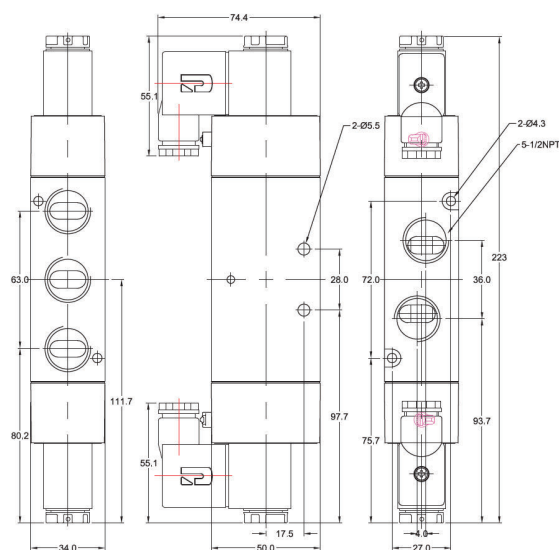
Valve Model	N4V410-15	N4V420-15	N4V430C-15	N4V430E-15	N4V430P-15
Valve Type	5/2		5/3		
Orifice and Cv	50mm² 2.79Cv		30mm² 1.68Cv		
Port Size	Inlet, Exhaust and Signal Ports all 1/2NPT				
Working Medium	40 Micron Filtered Air				
Operation	Internal Pilot				
Working Pressure	1.5-8bar (g) 22 - 120psi				
Test Pressure	12bar(g) 180psi				
Ambient Temperature	-20°C to 70°C -4°F to 160°F				
Solenoid Tolerance	DC +/-10% AC +/-15%				
Power Consumption	DC 2.5W AC 2.4VA				
Insulation	Class F IP65				
Coil Connection	DIN Connector Form B				
Cycle Rate	5/sec				
Response Time	0.05sec				

DIMENSIONS (mm)

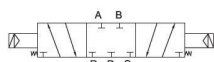
N5V410-15



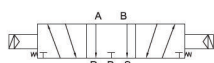
N5V420-15



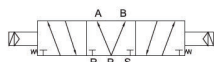
N5V430-15



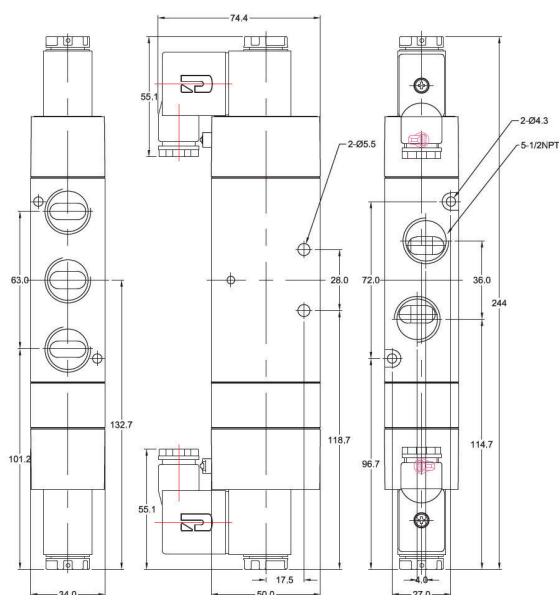
30C



30E



30P



- Centralized Manifold System
- Compact and Efficient Control Valve Installations
- Common Supply and Exhaust ports
- 25 pin D-sub Electrical Connector
- 5/2 and 5/3 way Control Valve Options
- Single and Double Coil Options



MCS

100

06

C

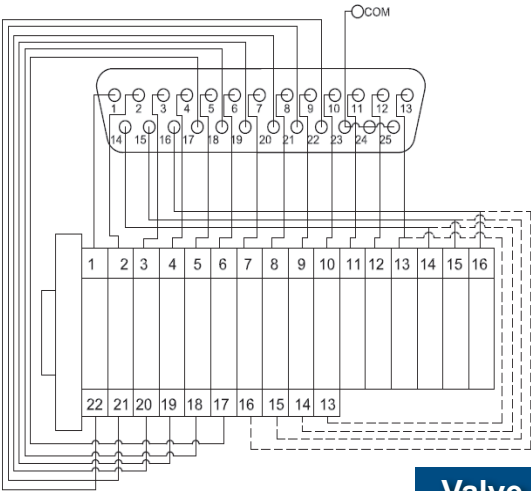
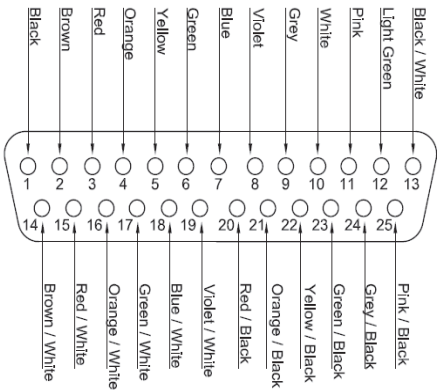
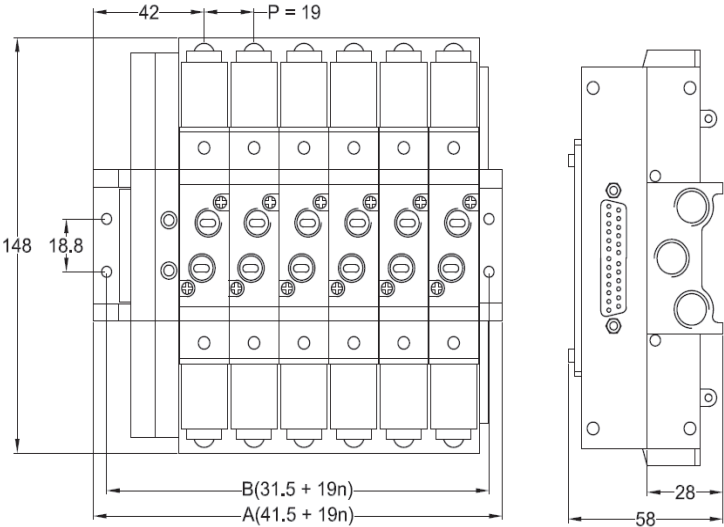
E4

24VDC

Series Type		Valve Type	Valve Port Size		Valve Function		Valve Combination	Voltage
MCS	BSPP	100 Series	06	1/8	C	Double Coil Center Closed	Refer to Table Opposite for Code	12VDC
NMCS	NPT				E	Double Coil Center Exhaust		24VDC
					P	Double Coil Center Pressure		

SPECIFICATIONS			
Valve Type	5/2 Single Coil	5/2 Double Coil	5/3 Double Coil
Orifice and Cv	12mm ² 0.67Cv		9mm ² 0.5Cv
Port Size	G1/8 or 1/8NPT		
Working Media	40μ Compressed Air		
Operation	Internally Piloted		
Working Pressure	1.5 - 8bar (22.5 - 120psi)		
Ambient Temperature	5-50°C (41-122°F)		
Voltage Tolerance	+/-10%		
Power Consumption	2.8W per coil		
Connector Insulation	F Type IP65		
Cycle Rate	5/sec		
Response Time	0.05sec		

DIMENSIONS (mm)



Valve Combination

			SINGLE SOLENOID VALVE																
			a	b	c	d	e	f	g	h	i	j	k	l	m	n	o	p	q
			0	1	2	3	4	5	6	7	8	9	10	11	12	13	14	15	16
DOUBLE SOLENOID VALVE	A	0	●	●	●	●	●	●	●	●	●	●	●	●	●	●	●	●	●
	B	1	●	●	●	●	●	●	●	●	●	●	●	●	●	●	●	●	
	C	2	●	●	●	●	●	●	●	●	●	●	●	●	●	●	●		
	D	3	●	●	●	●	●	●	●	●	●	●	●	●	●	●			
	E	4	●	●	●	●	●	●	●	●	●	●	●	●	●				
	F	5	●	●	●	●	●	●	●	●	●	●	●	●					
	G	6	●	●	●	●	●	●	●	●	●	●	●						
	H	7	●	●	●	●	●	●	●	●									
	I	8	●	●	●	●	●	●	●										
	J	9	●	●	●	●	●												
	K	10	●	●	●														