
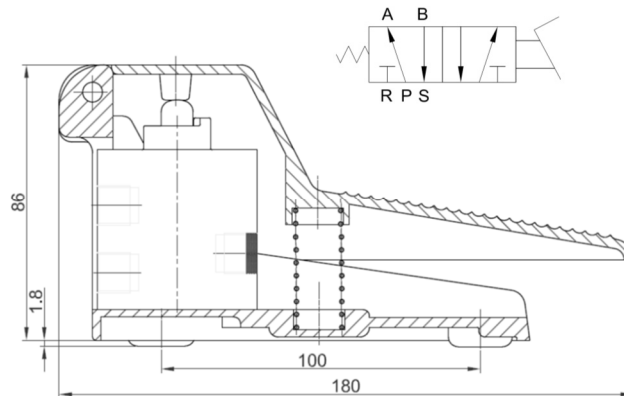
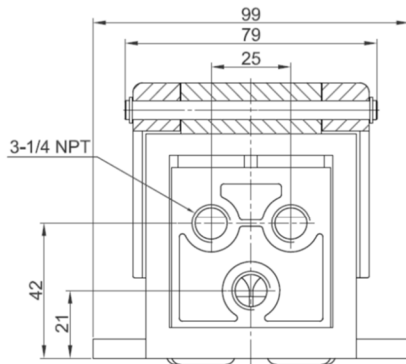



Three standard types of foot pedal valve as shown below. Other types are available such as 3-way models. Please enquire. All ports for supply and signal and exhaust are 1/4NPT.

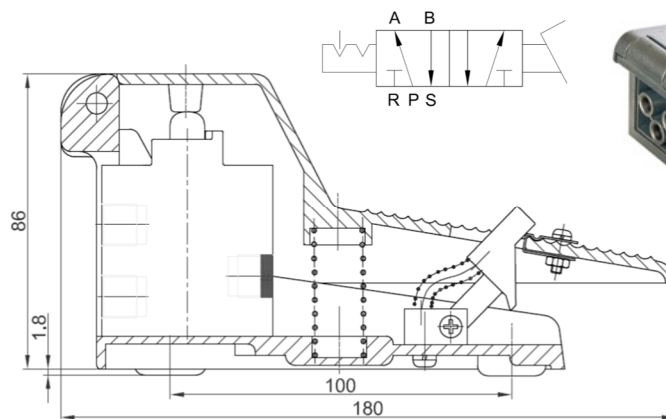
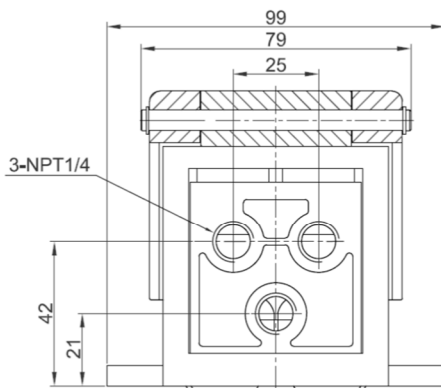
- 5 Port Two Position (N4F210-08)
- 5 Port Two Position With Latching Detent (N4F210-08L)
- 5 Port Two Position With Foot Guard (N4F210-08G)


Dimensions (mm)

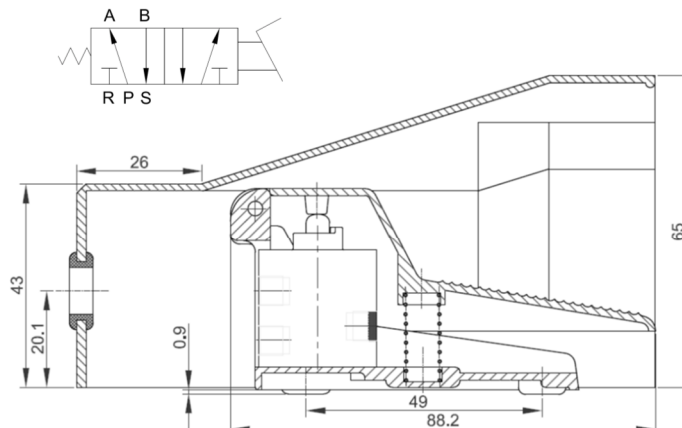
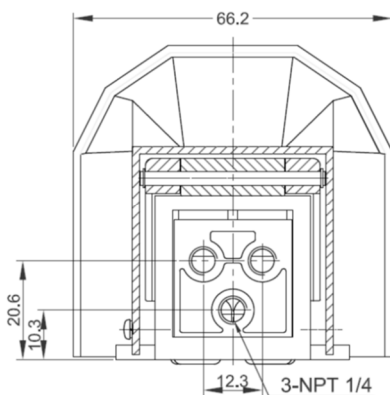
**N4F210-08** 



**N4F210-08L** 



**N4F210-08G** 



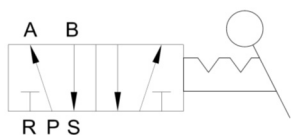
The N4H is available in 1/8, 1/4, 3/8 and 1/2NPT ports with either a 5/2 or 5/3 operation.

An ergonomically designed rubber handle with a dust cover to prevent debris from interfering with the lever mechanism, this valve design ensures reliability and long life. The M22 thread offers a panel mount installation option.

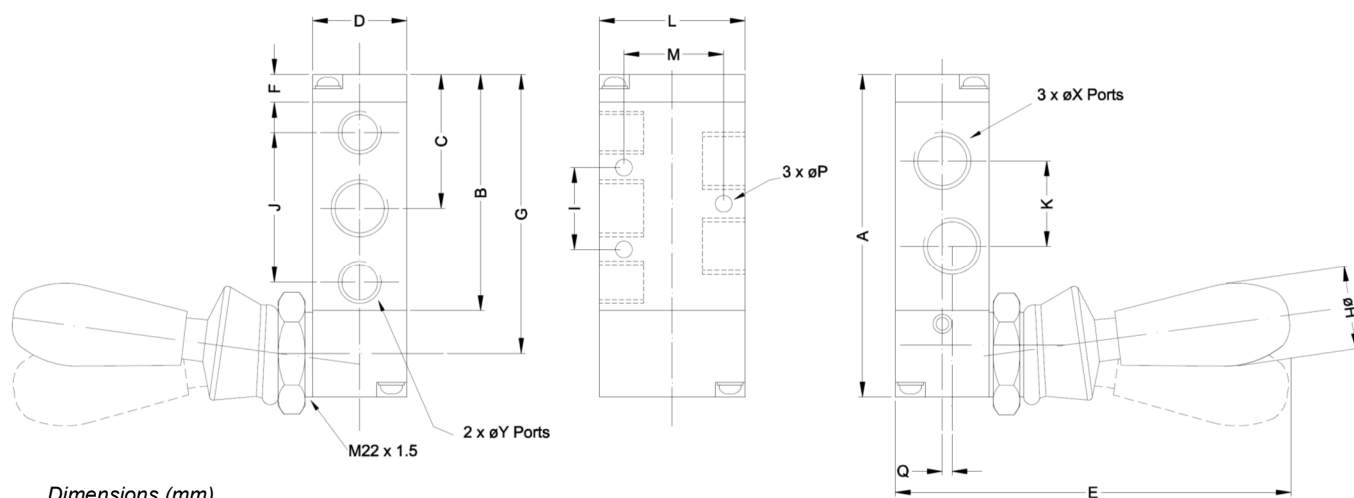
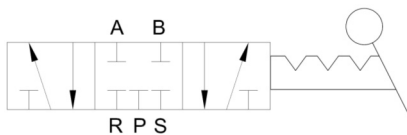
Finished in hard anodized black aluminum.

### Dimensions (mm)







N4H \*\*\*-\*\* 2 position



N4H \*\*\*-C\*\* 3 position

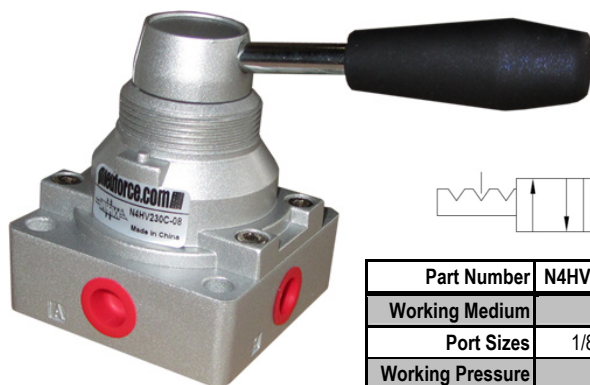


Dimensions (mm)

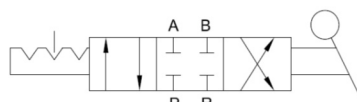
	N4H210-08 	N4H230C-08 	N4H310-10 	N4H330C-10 	N4H410-15 	N4H430C-15 
Type	2 position	3 position	2 position	3 position	2 position	3 position
A	76	95	96	115	126	147
B	56.5	75.5	72	91	102	123
C	31.5	31.5	40	60	55.5	76.5
D	22	22	27	27	34	34
E	95	95	100	100	110	110
F	6.5	6.5	7.5	7.5	7.5	7.5
G	66.5	85.5	84	103	114	135
ØH	18	18	18	18	18	18
I	20	20	24	24	28	28
J	36	36	45	45	63	63
K	21	21	24	24	36	36
L	35	35	40	40	50	50
M	21	21	27	27	35	35
X Ports	1/8NPT	1/8NPT	3/8NPT	3/8NPT	1/2NPT	1/2NPT
Y Ports	1/4NPT	1/4NPT	3/8NPT	3/8NPT	1/2NPT	1/2NPT
P	4.3	4.3	4.3	4.3	5.5	5.5
Q	1.5	1.5	2	2	-	-


## N4HV Rotary Valve

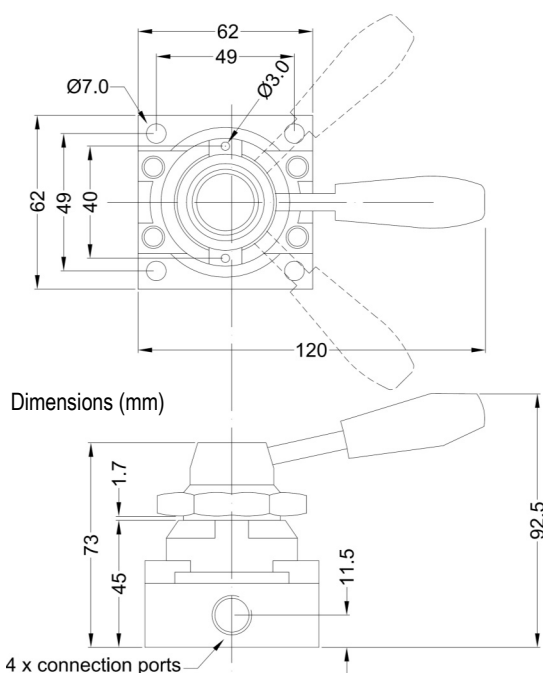
The N4HV is available in 1/8 and 1/4 NPT ports (*3/8 and 1/2 models available please inquire*) and is used to mount directly to the machinery it is being used on. This selection valve is commonly used for the manual actuation of pneumatic cylinders and other pneumatic devices. The ceramic valve plate ensures a consistent performance and life.



Larger models with 3/8 or 1/2" ports available. Please contact.



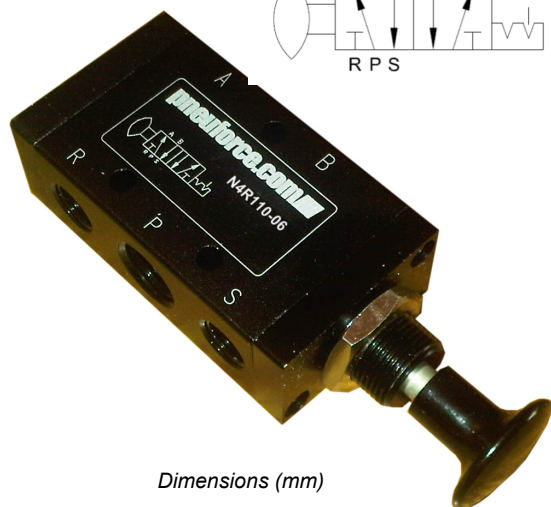
Part Number	N4HV230C-06	N4HV230C-08 
Working Medium	40 Micron Air	
Port Sizes	1/8NPT	1/4NPT
Working Pressure	150psi(g)	
Test Pressure	180psi(g)	
Max Temperature	32 - 140°F	
Working Angle	90° (2 x 45°)	



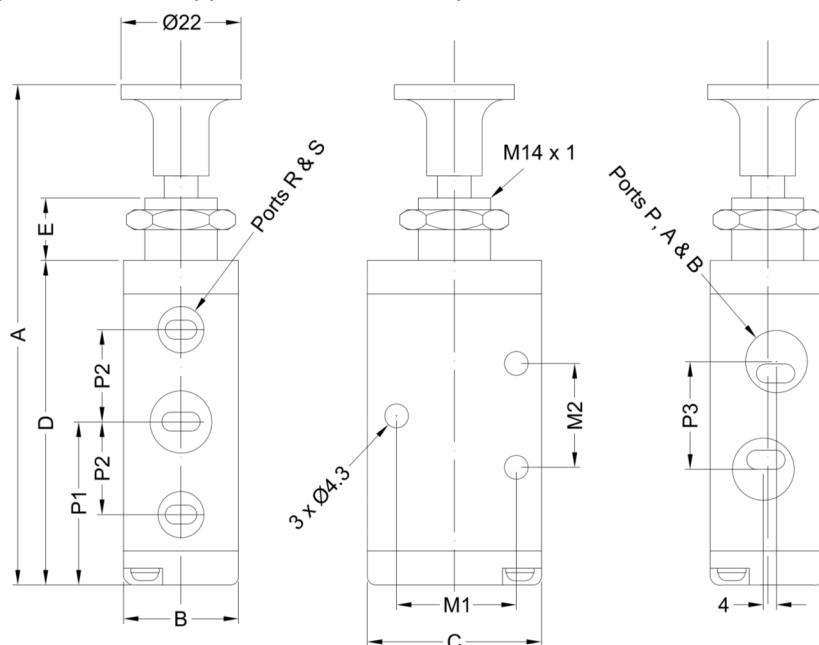
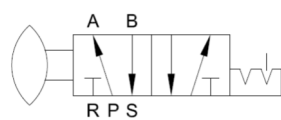
## N4R Push-Pull Valve

The N4R valves are used in applications where a simple “push-pull” operation is required. An ergonomically designed handle allows a definite and positive feel to valve actuation. The handle which is Ø22mm (7/8") diameter, is available in special styles and designs to suit user application. Please enquire.

Finished in hard anodized black aluminum.



Dimensions (mm)



Model	A	B	C	D	E	P1	P2	P3	M1	M2	Ports R,S	Ports P,A,B
N4R110-06 	102	18	27	59	13	27	14	16	19	14	1/8NPT	1/8NPT
N4R210-08 	98	22	35	64	13	32	18	21	24	20	1/8NPT	1/4NPT
N4R310-10 	115	27	40	79	13	40	22.5	24	27	24	1/4NPT	3/8NPT