

VFAV MATERIAL CONVEYORS



- Aluminum or Stainless Steel Option
- Hard anodized Finish – Resistant to abrasion
- No Moving Parts
- No Heat Generation
- Maintenance Free



VFAV	3/8	N
Series	Vacuum Port	Thread Types
	1/4	BSP (G)
	3/8	N
	1/2	NPT
	3/4	

The VFAV venturi is an adjustable vacuum venturi offering a straight through flow design. This design feature enables these units to be used in dusty or dirty vacuum applications such as brick, concrete, wood and porous box handling.

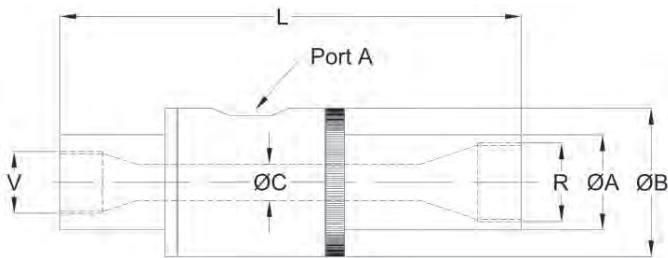
The VFAV venturi is adjustable independent of the compressed air inlet pressure by increasing and decreasing the venturi aperture. This is achieved by rotating the exhaust assembly on the right as shown in the product image above and setting this position with the lock ring.

SPECIFICATIONS

Model	Supply Pressure bar / psi	Air Consumption l/min/CFM @ Different Vacuum Levels -kPa / "Hg				
		17 / 5	34 / 10	50 / 15	68 / 20	84 / 25
VFAV250	5.5 / 80	112/4	169/6	233/8	276/10	342/12
VFAV375		176/6	327/11	485/17	595/21	825/29
VFAV500		340/12	625/22	795/28	940/33	1280/45
VFAV750		650/23	875/31	1250/44	1790/63	2550/90

Model	Supply Pressure bar / psi	Vacuum Flow l/min/CFM @ Different Vacuum Levels -kPa/"Hg				
		17 / 5	34 / 10	50 / 15	68 / 20	84 / 25
VFAV250	5.5 / 80	112/10	169/8.5	233/7	276/6	342/4.5
VFAV375		176/30	327/26	485/22	595/18	825/14
VFAV500		340/60	625/47	795/40	940/35	1280/23
VFAV750		650/120	875/87	1250/70	1790/51	2550/40

DIMENSIONS (mm)



Model	V Thread	R Thread	L	ØA	ØB	ØC	Port A
VFAV250	1/4	1/4	94-105	19	32	6.5	1/8
VFAV375	3/8	1/2	155-165	25	45	10	3/8
VFAV500	1/2	3/4	155-160	32	51	10	3/8
VFAV750	3/4	1	175-189	38	58	13	1/2

Features:

- Aluminum or Stainless Steel Option
- Hard anodized finish – resistant to abrasion
- No moving parts or heat generation
- Maintenance free



Suitable for conveying:

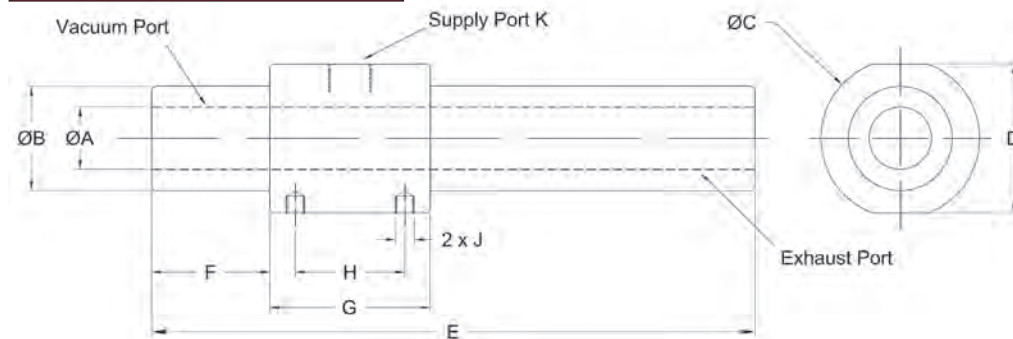
- Powder material, granular material
- Machining swarf, chips, fumes
- Wood chips & small parts

VFMC	38	N
Series	Conveyor Passage Ø	Thread Type
9	9mm (3/8")	BSPP (G)
13	13mm (1/2")	N
19	19mm (3/4")	NPT
25	25mm (1")	
38	38mm (1.5")	

SPECIFICATIONS

Model	Air Velocity m/s / ft/sec	Vacuum Flow l/min/SCFM	Max Vacuum -kPa/"Hg	Air Consumption l/min / CFM	
				2.8bar/41psi	5.5bar/80psi
VFMC9	100/325	425/15	16/5	95/3.4	170/6
VFMC13	110/361	870/31	35/10	395/14	680/24
VFMC19	100/325	1825/65	28/8.4	790/28	1365/48
VFMC25	68/223	4400/88	4.42.4	405/14	695/24
VFMC38	82/270	5610/198	9/2.7	790/28	1365/48

DIMENSIONS (mm)



Model	ØA	ØB	ØC	D	E	F	G	H	J	K
VFMC9	9.5	19	32	30	89	19	25	18	M4	1/8
VFMC13	12.5	24	38	34	140	25.5	32	23		1/4
VFMC19	19	32	50	45	190	38	50	35		3/8
VFMC25	25	38	59	55	198	40	56	40		3/8
VFMC38	38	50	69	65	205	40	60	42		