

VFF FLAT CUPS



- Flat design vacuum cup
- Internal cleats for increased grip in lateral movement
- Good for shear movement and grip
- Available from 15mm to 150mm diameter
- NBR, FDA Silicone and metal detectable materials



VFF		40-2		N	
Series	Model	Diameter	Cup Material		
	15	15	N	Nitrile	
	20	20	S	Red Silicone	
	30-2	30	ST	White Translucent Silicone	
	40-2	40	SMI	Metal Impregnated Red Silicone	
	50-2	50	STMI	Metal Impregnated White Translucent Silicone	

Part number example VFF30-2S 30mm diameter flat vacuum cup in red silicone

LEVEL COMPENSATORS

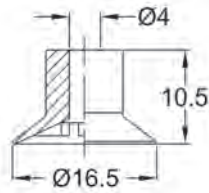


This cup series is available in metal detectable FDA compliant silicone.
 For red colored metal detectable silicone use material code SMI.
 For white translucent metal detectable silicone use material code STMI.

Refer to page 1.32 for suitable level compensators for this vacuum cup range.



VFF15-2

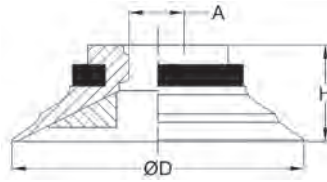


DIMENSIONS (mm)

Model	ØD	ØA	L	Fitting Type
VFF15-2*	16.5	4	16	B

* add cup material code

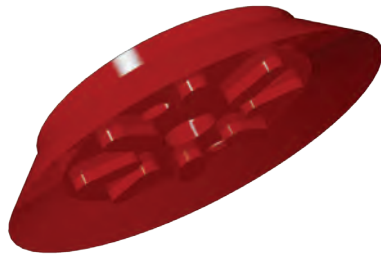
VFF20 | VFF30-2 | VFF40-2 | VFF50-2



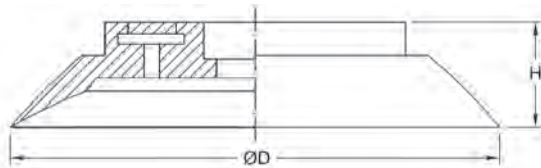
Model	ØD	ØA	L	Fitting Type
VFF20*	22	5.5	8	C
VFF30-2*	32		10	
VFF40-2*	40	6.5	13	D
VFF50-2*	50	10.5	13	E

* add cup material code

VFF75WN | VFF110WN | VFF150WN



The Vacuforce VFF75, 110 and 150 series have an integral metal washer to offer secure attachment to the associated cup fittings. These large diameter flat vacuum cups are used to handle larger objects such as wooden boards, stone counter tops, steel sheets and similar products in both a horizontal and shear orientation. These three models of cups are connected to the fitting with small bolts that attach from the inside of the vacuum cup. The image on the right shows the cup and fitting assembled.



Model	ØD	PCD x # Positions	L	Fitting Type
VFF75W*	75	35 x 4	13	J
VFF110W*	115	55 x 7	20	K
VFF150W*	150	71 x 7	26	L

* add cup material code



For cup fittings refer to page 1.34