



# VACUUM CYLINDERS



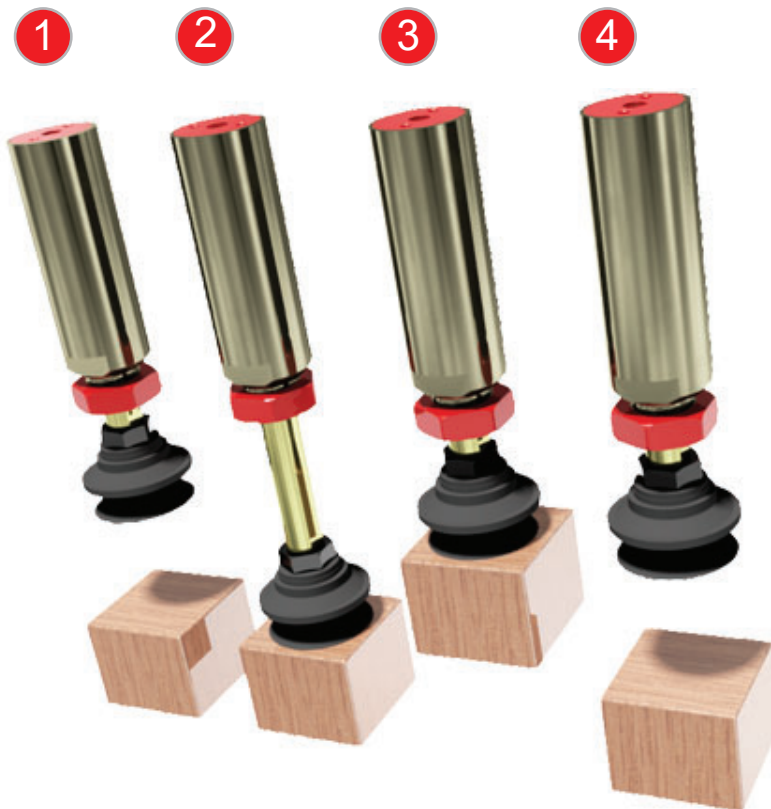
## ADVANTAGES

- Non Rotating Piston Rod
- Eliminate the need for extra Z axis
- Automatic Z axis stroke compensation
- The cylinder will retract as soon as the cup makes a seal on the part being handled
- No additional controls are required
- Rapid cycle rates ensure fast production
- Maintenance and lubrication free
- Hard Anodized and Teflon® coating for long life



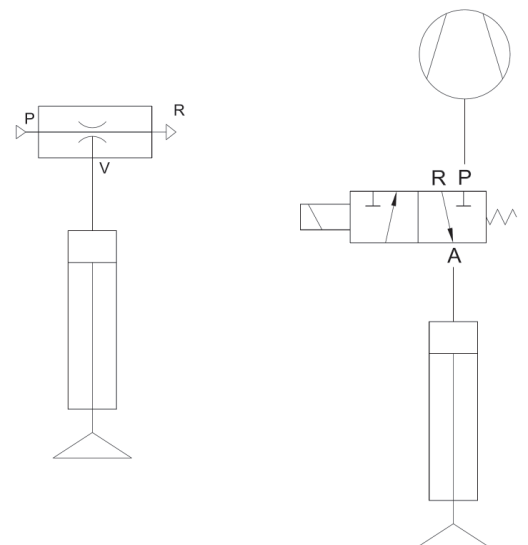
## FUNCTION

- The vacuum cylinders are at rest with the piston rod retracted in the up position **(1)**
- When vacuum is applied, the piston moves downwards (extends) until the vacuum cup, which is attached to the piston via the connection thread, seals against the load to be lifted **(2)**
- Both sides of the cylinder are now equalized and the internal spring retracts the cylinder rod to its original position holding the part securely **(3)**
- When vacuum is turned off the part is released from the vacuum suction cup **(4)**



VC		50	
Series		Model	Stroke
		25	25mm
		50	50mm

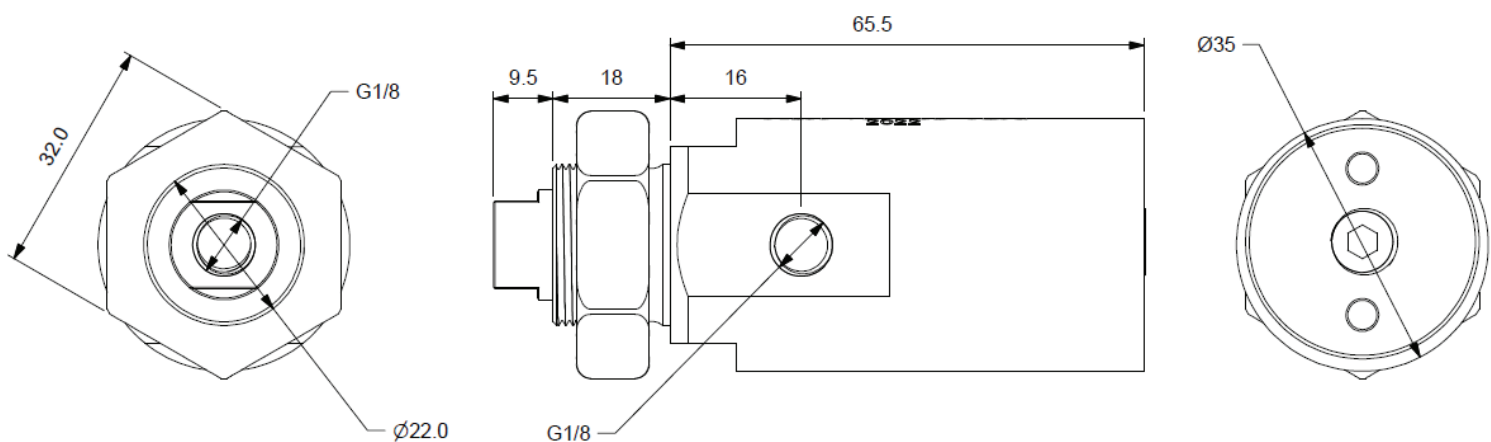
## TYPICAL CIRCUITS



## SPECIFICATIONS

Model	VC25	VC50
Stroke (mm)	25	50
Lifting Force	12N / 1.2kg / 2.5lb	
Min Flow Required	7.5l/min / 0.25CFM	25l/min / 0.88CFM
Cycle Time	0.4sec	0.5sec
Weight	145g / 5.1oz	184g / 6.5oz

## VC25 DIMENSIONS (mm)



## VC50 DIMENSIONS (mm)

