



VACUUM CYLINDERS



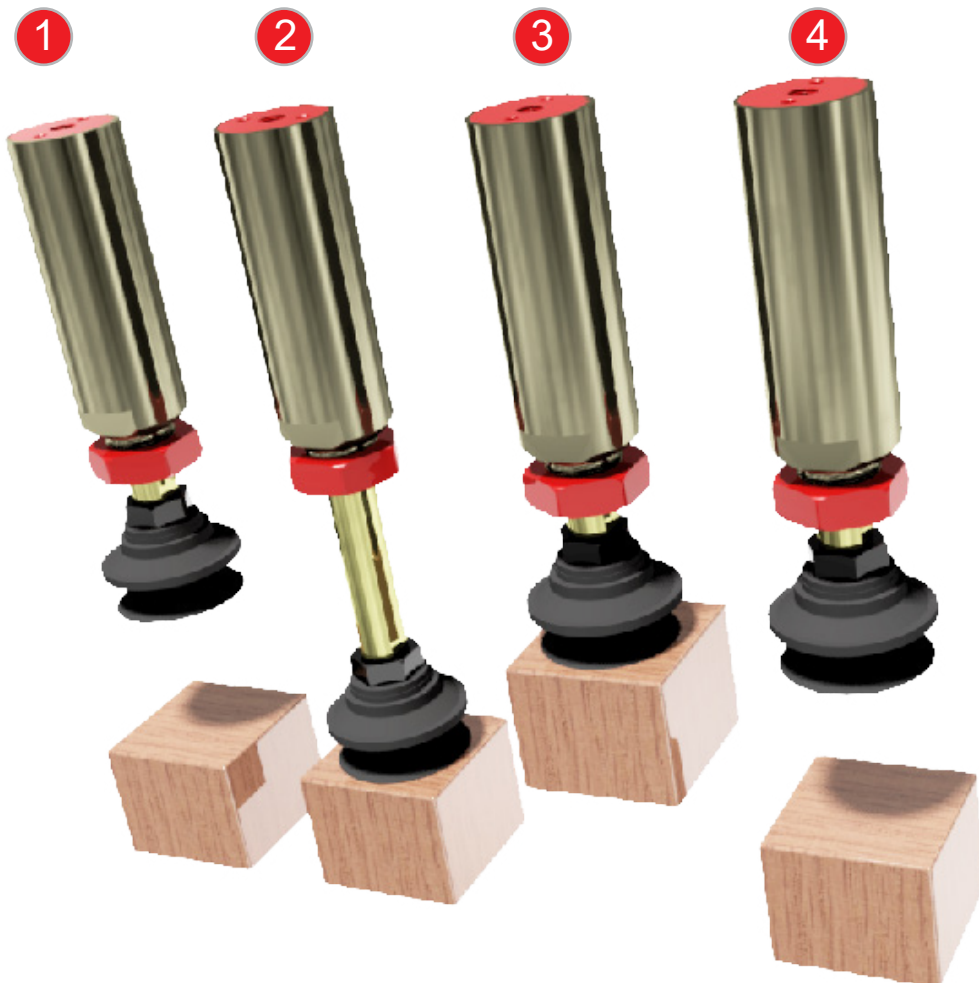
ADVANTAGES

- Eliminate the need for extra Z axis
- Automatic Z axis stroke compensation
- The cylinder will retract as soon as the cup makes a seal on the part being handled
- No additional controls are required
- Rapid cycle rates ensure fast production
- Maintenance and lubrication free
- Hard Anodized and Teflon® coating for long life

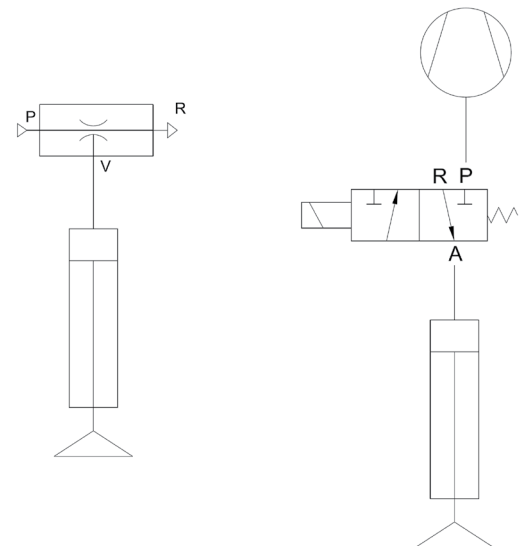


FUNCTION

- The vacuum cylinders are at rest with the piston rod retracted in the up position **(1)**
- When vacuum is applied, the piston moves downwards (extends) until the vacuum cup, which is attached to the piston via the connection thread, seals against the load to be lifted **(2)**
- Both sides of the cylinder are now equalized and the internal spring retracts the cylinder rod to its original position holding the part securely **(3)**
- When vacuum is turned off the part is released from the vacuum suction cup **(4)**



TYPICAL CIRCUITS



VC

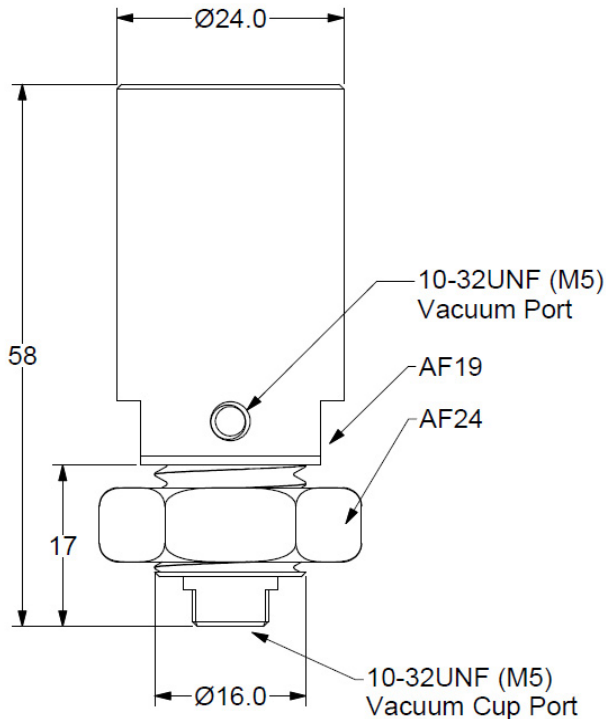
17

Series	Model	Stroke
	17	17mm
	25	25mm
	50	50mm

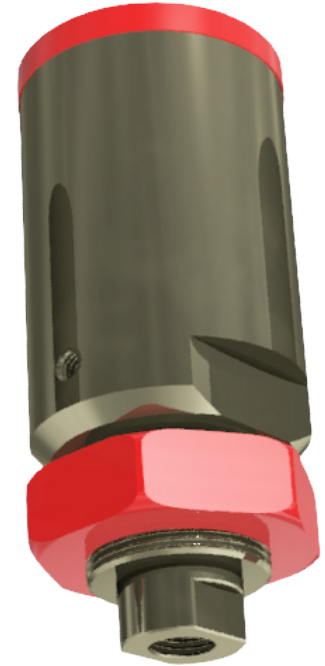
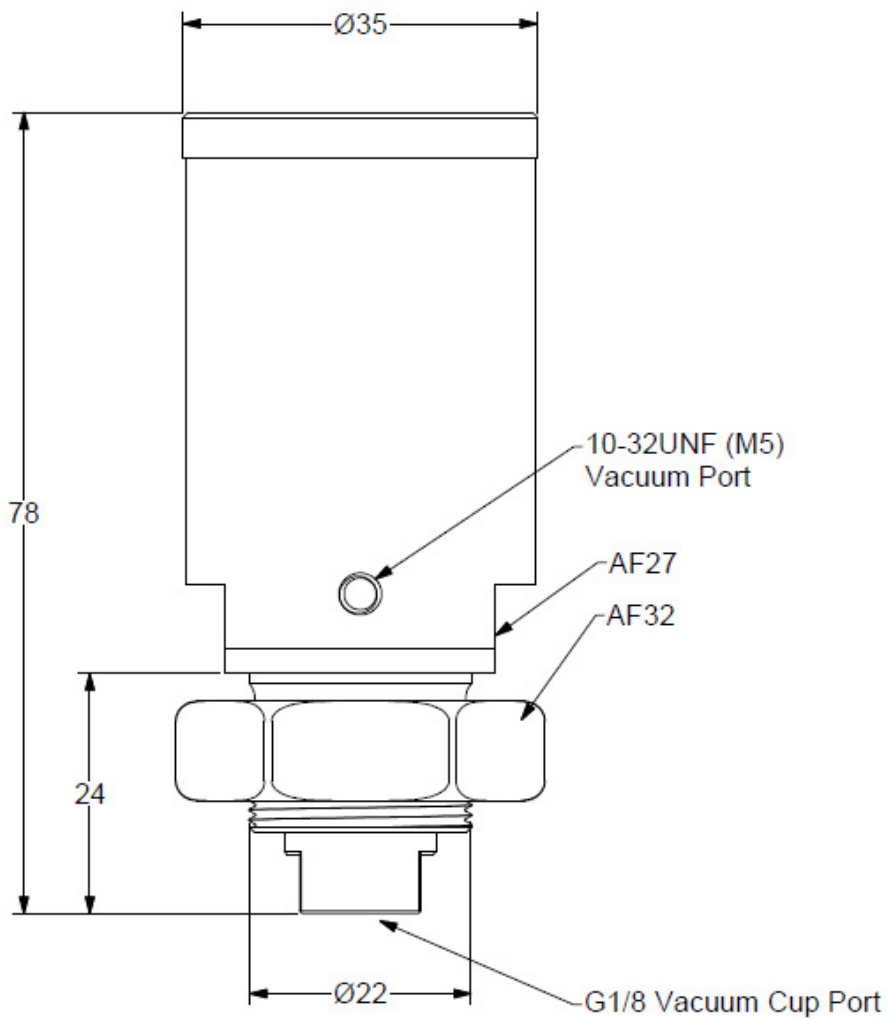
SPECIFICATIONS

Model	VC17	VC25	VC50
Stroke	17	25	50
Lifting Force	5N / 0.5kg / 1lb		
Min Flow Required	5l/min / 0.17CFM	7.5l/min / 0.25CFM	25l/min / 0.88CFM
Cycle Time	0.3sec	0.4sec	0.25sec
Weight	50g / 1.75oz	145g / 5.1oz	310g / 10.9oz

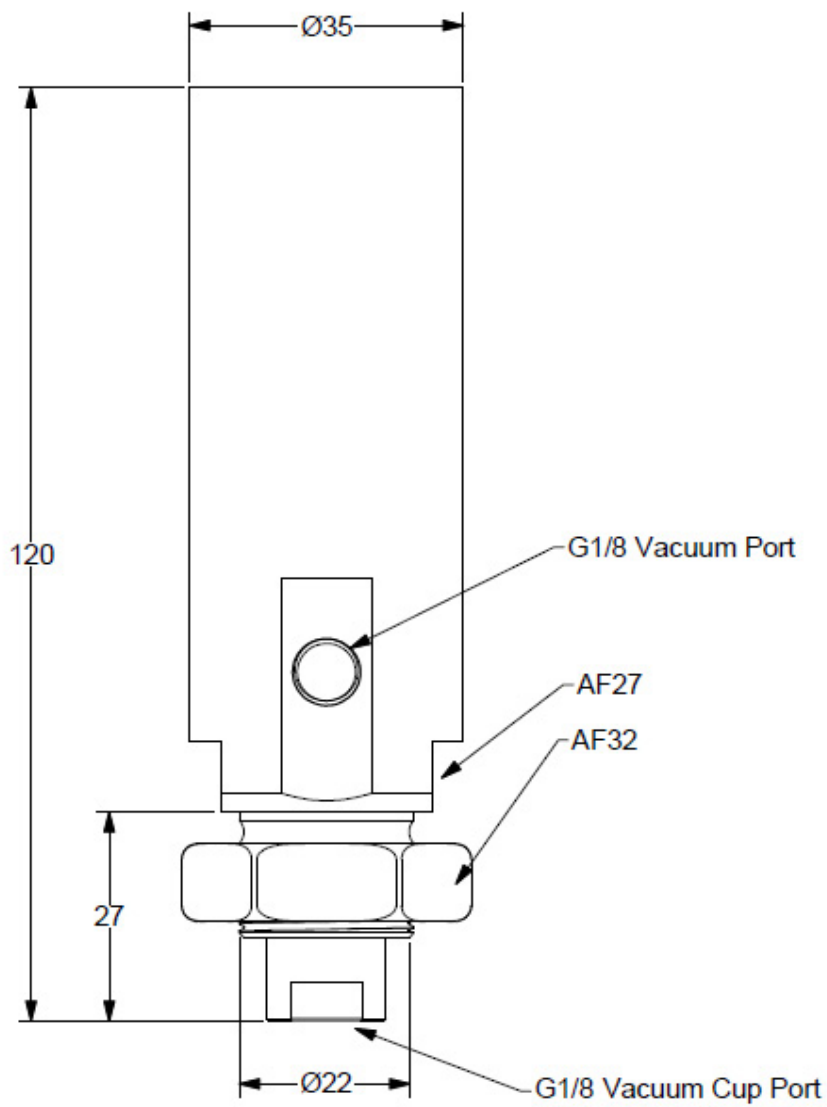
VC17 DIMENSIONS (mm)



VC25 DIMENSIONS (mm)



VC50 DIMENSIONS (mm)





NOTES